

# Featured Communities



[wesleypropertymanagement.com](http://wesleypropertymanagement.com)

# Colonial Village Apartments

48 N. 18th Street & 1702-34 N. Troy Street, **ARLINGTON, VA**

Colonial Village Apartment community is in the heart of Arlington within walking distance to Courthouse and Rosslyn Metro Stations. The community features red brick, garden-style, low-rise buildings. Residents have access to the on-site Community Resource Center, which hosts free educational classes, after-school homework help, summer camps, and more.

## AMENITIES

- On-site Community Resource Center (CRC)
- ADA compliant units
- Central heating and air conditioning
- Energy-efficient upgrades (meets EarthCraft green building standards)
- Konecto luxury smooth surface flooring
- 50 acres beautifully landscaped with mature trees and winding pathways



**Units: 162 • Beds: 1-3 • Baths: 1-2**

Visit Community  
Webpage



# Colonial Village Apartments



Visit Community  
Webpage

# Colonial Village Apartments

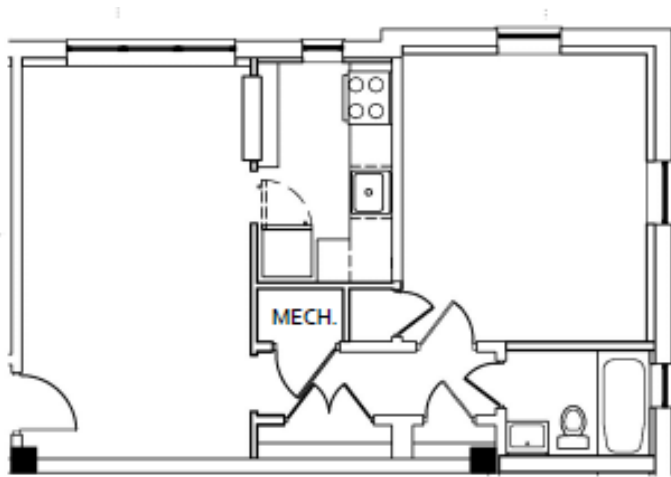
## CURRENT SPECIAL:

1 Bedroom 710 Sq. Ft \$1577.00

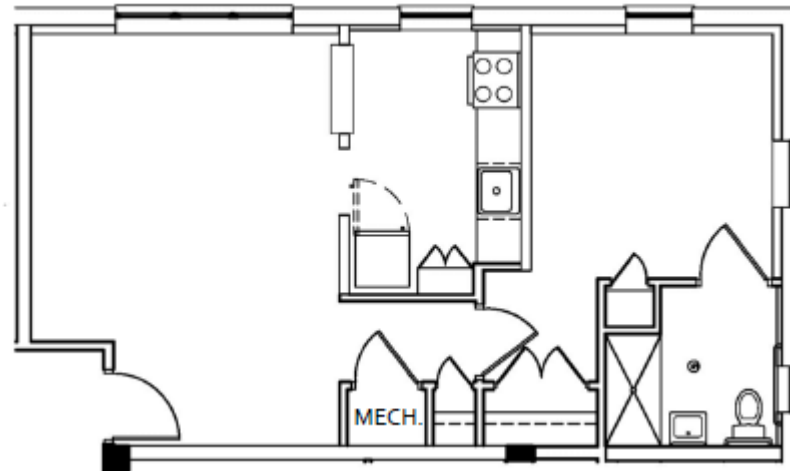
2 Bedroom 1130 Sq. \$2177.00

\$150.00 Gift Card for new leases

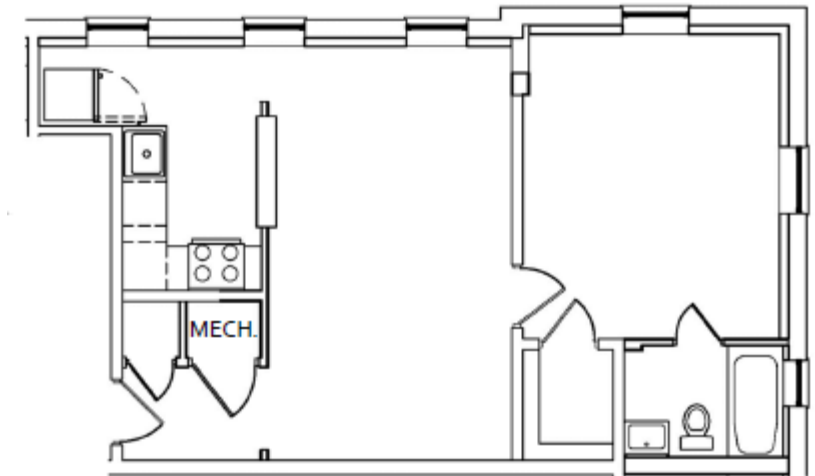
## 1 bedroom



1 Bedroom 1 Bath Type B



1 Bedroom 1 Bath Type C



1 Bedroom 1 Bath Type H.a

Visit Community  
Webpage

*\*\*Virtual tours can be found on apartments.com\*\**

# Colonial Village Apartments

## CURRENT SPECIAL:

**1 Bedroom** 710 Sq. Ft \$1577.00

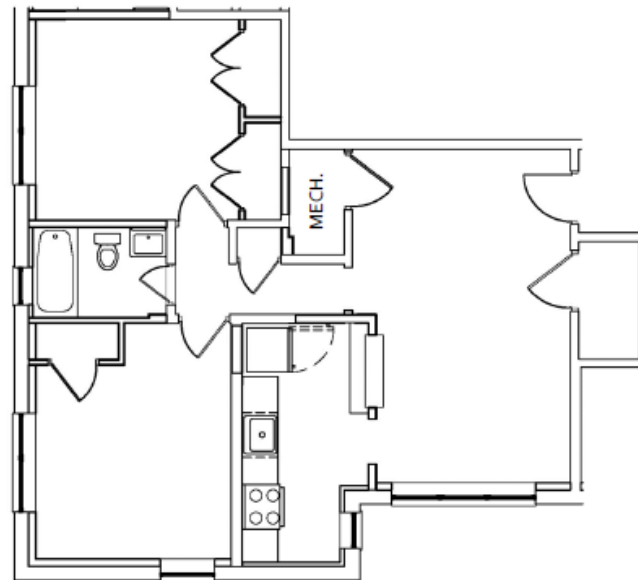
**2 Bedroom** 1130 Sq. \$2177.00

**\$150.00 Gift Card** for new leases

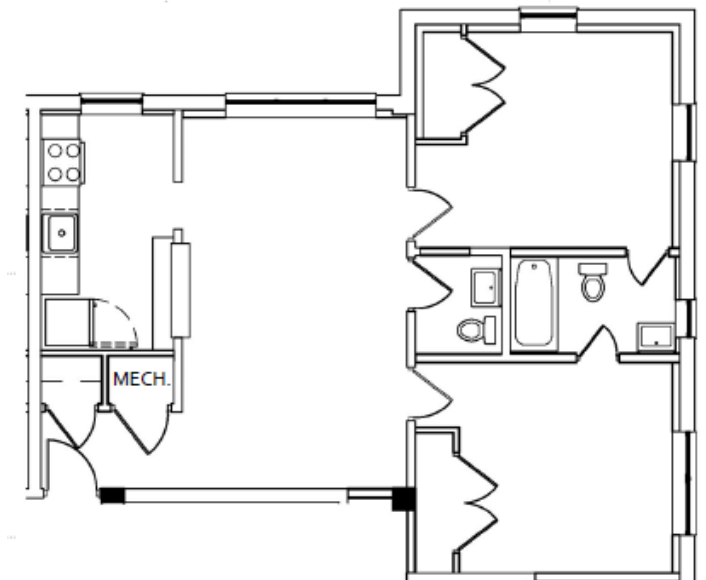
## 2 bedroom



2 Bedroom 1 Bath Type D



2 Bedroom 1 Bath Type E



2 Bedroom 1.5 Bath Type A

Visit Community  
Webpage

*\*\*Virtual tours can be found on apartments.com\*\**



# The Fallstead at Lewinsville Center

1609 GREAT FALLS STREET, MCLEAN, VA

The Fallstead at Lewinsville Center is an independent-living seniors community for adults ages 62+, offering modern and spacious rental units that allow residents to comfortably age in place. An on-site Resident Services Coordinator is available daily to assist residents.

## AMENITIES

- 24-hour maintenance response
- Open floor plans with universal design features
- Individually controlled heat and air conditioning
- Fitness center
- Community center with “teaching kitchen”
- Business center
- Media room
- Library
- Landscaped courtyard with gardening plots



**Units: 98** • **Beds: 1-2** • **Baths: 1**

[Visit Community Webpage](#)

# The Fallstead at Lewinsville Center



[Visit Community Webpage](#)



# The Fallstead at Lewinsville Center

## 1 bedroom



## 2 bedroom



Visit Community  
Webpage



# Madison Ridge Apartments

14806 RYDELL RD, CENTREVILLE, VA

Located in Centreville, Madison Ridge features one- and two-bedroom apartments with direct bus line service to the Vienna Metro Station. An on-site Resident Services Coordinator is available daily to assist residents.

## AMENITIES

- On-site Community Resource Center (CRC)
- In-unit washer/dryers
- Wall-to-wall carpeting
- Dishwashers
- Central A/C and heat
- Ceiling fans
- Balconies/patios
- Community swimming pool
- Two tennis courts
- Nature trail
- Playgrounds
- Pet exercise area

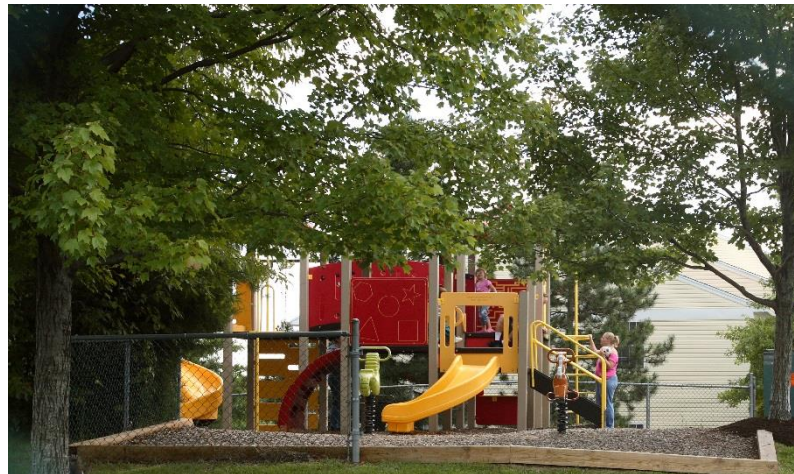


**Units: 98** • **Beds: 1-2** • **Baths: 1**

[Visit Community Webpage](#)

# Madison Ridge Apartments

---

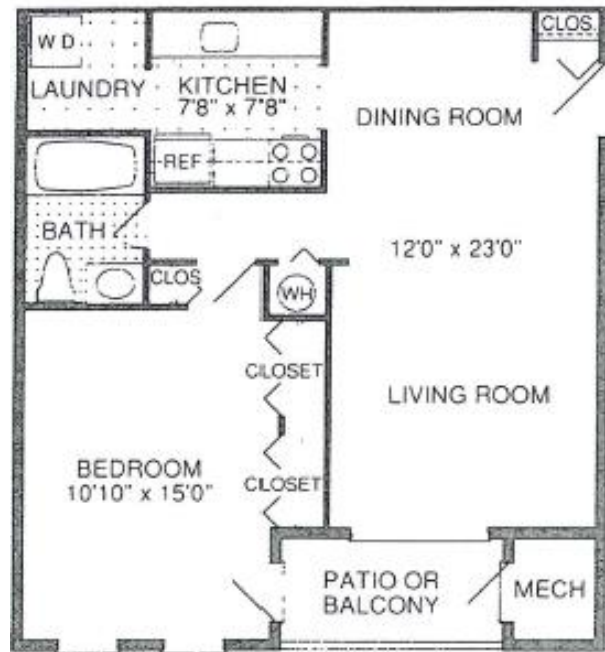


[Visit Community Webpage](#)



# Madison Ridge Apartments

## 1 bedroom



## 2 bedroom



Visit Community  
Webpage



# Quarry Station Senior Apartments

8750 QUARRY RD, MANASSAS, VA

Located next to historic Old Town Manassas, this community is designed specifically for seniors. An on-site Resident Services Coordinator is available daily to assist residents.

## AMENITIES

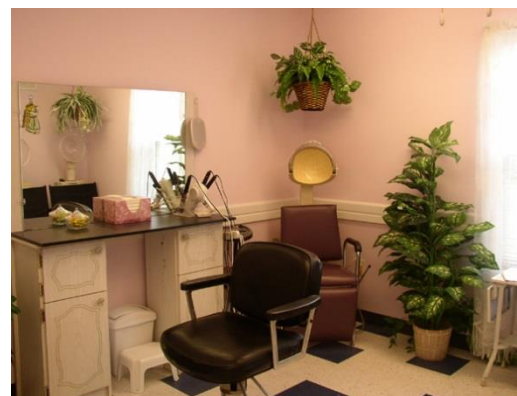
- Emergency call buttons
- 24-hour maintenance response system
- Central heating and air-conditioning
- Dishwashers
- Laundry facility on each level
- Wall-to-wall carpeting
- Common spaces include: an arts & crafts room, library, wellness room for regular health screenings, computer lab, and an in-house beauty salon/barber
- Small pets allowed



**Units: 79 • Beds: 1-2 • Baths: 1-1.5**

[Visit Community Webpage](#)

# Quarry Station Senior Apartments

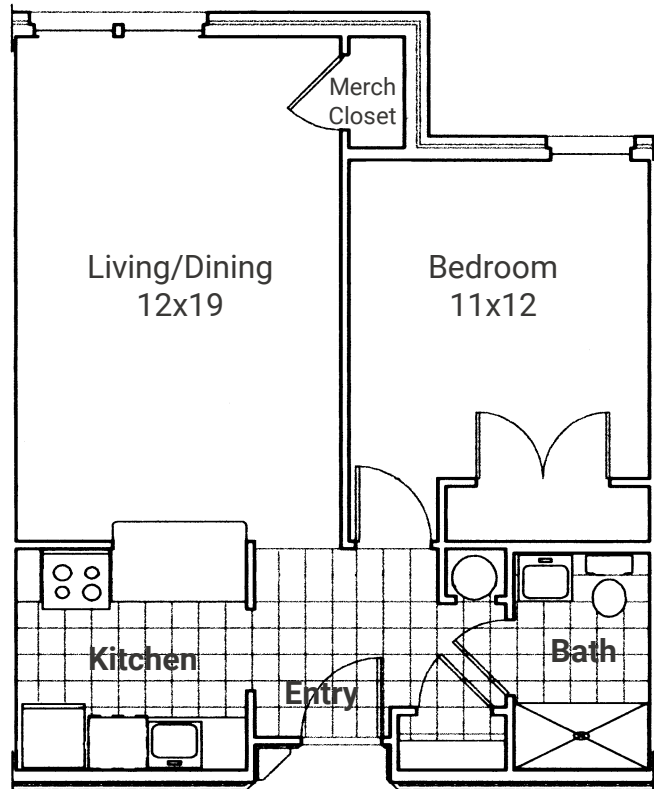


Visit Community  
Webpage

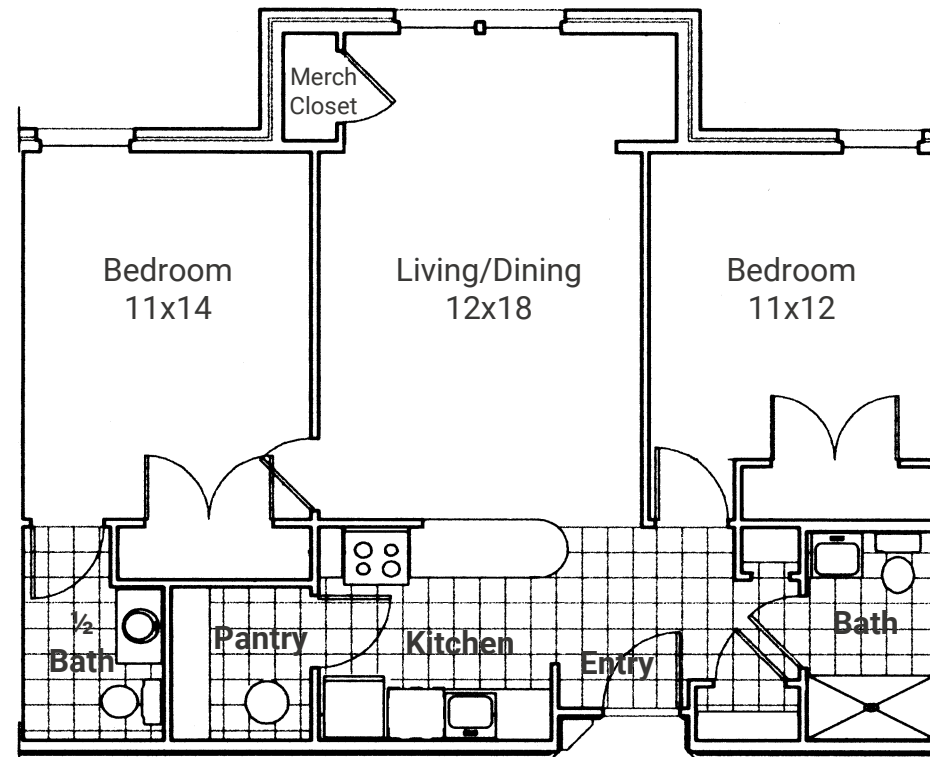


# Quarry Station Senior Apartments

## 1 bedroom



## 2 bedroom



Visit Community  
Webpage